

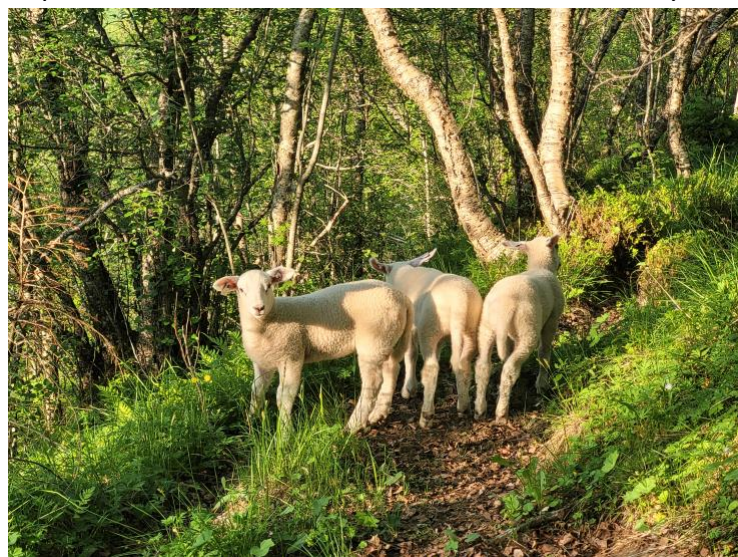


Integrating innovative TECHnologies along the value Chain
to improve small ruminant welfARE management



Welfare assessment measures for lambs

We made a description of animal-based measures and their definition as used in the **lamb studies** by TechCare. These are NOT intended to be a comprehensive protocol for assessing overall welfare. The most important welfare indicators for lambs identified by TechCare stakeholders were: **Water availability and quality***, **Food competition**, **Housing and environment**, **Stocking density*** and **Respiratory disease**.



Several other welfare issues were also identified, and issues marked with an asterisk can only be measured by resource-based or management measures and are thus not animal-based indicators. The TechCare welfare assessment protocol defines and describes each welfare issue, and suggests indicators to be used for monitoring and scoring these welfare issues – both for extensive (unhandled/field) and housed (handled) management practices. As far as possible, these are validated indicators drawn from prior studies (particularly the AWIN

project). Some welfare indicators are scored as yes/no or present/absent and others are described with a scale for scoring. In many cases the different scores are accompanied with example pictures. The TechCare welfare assessment protocol for **Lambs** is freely available for anyone to download and use at this website: <https://techcare-project.eu/outputs/welfare/>.



TEHCARE project has received funding from the European Union's Horizon 2020 Research and Innovation Program under grant agreement N°862050.